

# Vanguard Explorer VEXPX

## Benchmark

Russell 2000 Growth TR USD

## Overall Morningstar Rating™

★★★★

Out of 666 Small Growth funds. An investment's overall Morningstar Rating, based on its risk-adjusted return, is a weighted average of its applicable 3-, 5-, and 10-year Ratings. See disclosure for details.

## Morningstar Return

Above Average

## Morningstar Risk

Below Average

## Investment Strategy

The investment seeks to provide long-term capital appreciation.

The fund invests mainly in the stocks of small companies. These companies tend to be unseasoned but are considered by the advisors to have superior growth potential. These companies often provide little or no dividend income.

## Fees and Expenses

as of 02-20-09	
Prospectus Net Expense Ratio	0.51%
Prospectus Gross Expense Ratio	0.51%
Maximum Sales Charge	—
12b-1 Fee	—
Redemption Fee/Term	—

Waiver Data	Type	Exp. Date	%
—	—	—	—

## Operations and Management

Fund Inception Date	12-11-67
Portfolio Manager(s)	John Jack Granahan, CFA Kenneth L. Abrams
Management Company	The Vanguard Group, Inc.
Telephone	800-622-7447
Web Site	—

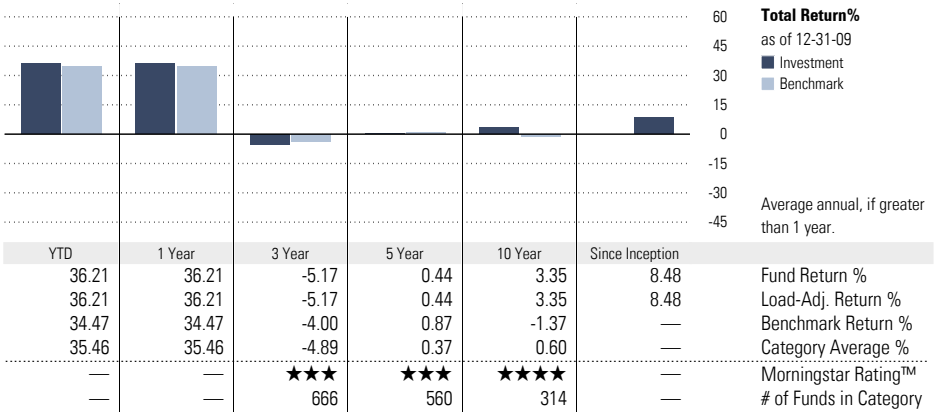
## Benchmark Description: Russell 2000 Growth TR USD

Russell 2000 Growth Index: Market-weighted total return index that measures the performance of companies within the Russell 2000 Index having higher price-to-book ratios and higher forecasted growth values. The Russell 2000 Index includes the 2000 firms from the Russell 3000 Index with the smallest market capitalizations. The Russell 3000 Index represents 98% of the investable US equity market.

## Category Description: Small Growth

Small-growth funds focus on faster-growing companies whose shares are at the lower end of the market-capitalization range. These funds tend to favor companies in up-and-coming industries or young firms in their early growth stages. As a result, the category tends to move in sync with the market for initial public offerings. Many of these funds invest in the technology, health-care, and services sectors. Because these businesses are fast-growing and often richly valued, their stocks tend to be volatile.

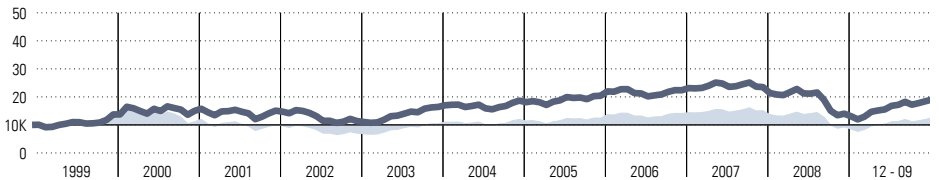
## Performance



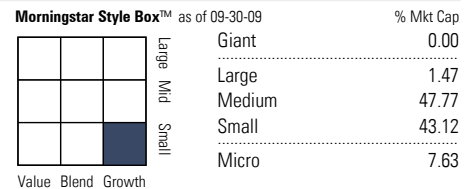
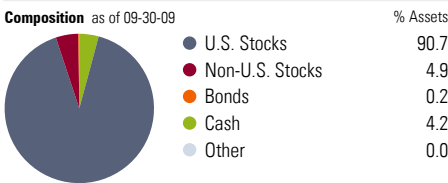
Quarter End Returns as of 12-31-09		YTD	1 Year	3 Year	5 Year	10 Year	Since Inception
Fund Return %		36.21	36.21	-5.17	0.44	3.35	8.48
Standardized Return %		36.21	36.21	-5.17	0.44	3.35	8.48

**Performance Disclosure: The performance data quoted represents past performance and does not guarantee future results. The investment return and principal value of an investment will fluctuate thus an investor's shares, when redeemed, may be worth more or less than their original cost. Current performance may be lower or higher than return data quoted herein.**

## Growth of \$10,000 as of 12-31-09



## Portfolio Analysis as of 09-30-09



Top 10 Holdings as of 09-30-09		% Assets
CMT Market Liquidity Rate		3.97
Polycom, Inc.		0.83
Alliance Data Systems Corporation		0.78
Vanguard Small Cap ETF		0.76
ON Semiconductor Corporation		0.71
MSC Industrial Direct Co., Inc.		0.63
Sensient Technologies Corporation		0.56
Euronet Worldwide, Inc.		0.55
WMS Industries, Inc.		0.53
DeVry, Inc.		0.50
Total Number of Stock Holdings	1098	
Total Number of Bond Holdings	2	
Annual Turnover Ratio %	112	
Total Fund Assets (\$mil)	8,648.02	

Morningstar Sectors as of 09-30-09		
	% Fund	S&P 500 %
Information	29.59	24.42
Software	9.99	4.78
Hardware	13.00	11.26
Media	1.70	2.56
Telecommunication	4.90	5.82
Service	48.16	38.77
Healthcare Service	17.13	11.89
Consumer Service	12.72	8.66
Business Service	9.67	3.85
Financial Service	8.64	14.37
Manufacturing	22.25	36.81
Consumer Goods	7.85	10.89
Industrial Materials	9.38	10.73
Energy	4.15	11.56
Utilities	0.87	3.63

# Important Disclosures

**The performance data quoted represents past performance and is no guarantee of future results. Your returns and the principal value of your investment will fluctuate so that your mutual fund shares, when redeemed, may be worth more or less than their original cost. Current performance may be lower or higher than the performance quoted. For performance current to the most recent month-end, call 800 TIAA-CREF (800 842-2273).** Fund portfolio statistics change over time. The fund is not FDIC insured, may lose value and is not guaranteed by a bank or other financial institution.

When used as supplemental sales literature, the Investment Profile must be preceded or accompanied by the fund's current prospectus as well as this disclosure statement.

## Performance

Total return reflects performance without adjusting for the effects of taxation, but is adjusted to reflect all actual ongoing fund expenses and assumes reinvestment of dividends and capital gains.

The fund's performance is compared with that of an index. The index is an unmanaged portfolio of specified securities and the index does not reflect any initial or ongoing expenses. A fund's portfolio may differ significantly from the securities in the index. The index selected by Morningstar may not necessarily be the fund's actual benchmark, as specified in the fund prospectus.

## Best and Worst Three-Month Performance

Morningstar calculates best and worst three-month period (in percentage) in-house on a monthly basis.

*Best Three-Month Period:* The highest total return the stock has posted in a consecutive three-month period over the trailing 15 years, or if a fund does not have 15 years of history, it will go back as far as the inception date.

*Worst Three-Month Period:* The lowest total return the stock has posted in a consecutive three-month period over the trailing 15 years or, if a fund does not have 15 years of history, it will go back as far as the inception date.

## Growth of \$10,000 Graph

The Growth of \$10,000 graph shows a fund's performance based on how \$10,000 invested in the fund would have grown over time. The returns used in the graph are not load-adjusted. The growth of \$10,000 begins at the date of the fund's inception, or the first year listed on the graph, whichever is appropriate. Located alongside the fund's graph line is a line that represents the growth of \$10,000 in an index. The inclusion of the index allows investors to compare the performance of the fund with the performance of a benchmark index.

## Morningstar Rating™

Often simply called the Star Rating, the Morningstar Rating brings load-adjustments, performance (returns) and risk together into one evaluation. To determine a fund's star rating for a given time period (three, five, or 10 years), the fund's risk-adjusted return is plotted on a bell curve: If the fund scores in the top 10% of its category, it receives 5 stars

(Highest); if it falls in the next 22.5%, it receives 4 stars (Above Average); a place in the middle 35% earns 3 stars (Average); those lower still, in the next 22.5%, receive 2 stars (Below Average); and the bottom 10% get only 1 star (Lowest). The Overall Morningstar Rating is a weighted average of the available three-, five-, and 10-year ratings.

## Morningstar Return

This statistic is a measurement of a fund's excess return over a risk-free rate (the return of the 90-day Treasury bill). In each Morningstar Category, the top 10% of funds earn a High Morningstar Return, the next 22.5% Above Average, the middle 35% Average, the next 22.5% Below Average, and the bottom 10% Low. Morningstar Return is measured for up to three time periods (three-, five-, and 10-years). These separate measures are then weighted and averaged to produce an overall measure for the fund. Funds with less than three years of performance history are not rated.

## Morningstar Risk

This statistic evaluates the variations in a fund's monthly returns, with an emphasis on downside variations. In each Morningstar Category, the 10% of funds with the lowest measured risk are described as Low Risk, the next 22.5% Below Average, the middle 35% Average, the next 22.5% Above Average, and the top 10% High. Morningstar Risk is measured for up to three time periods (three-, five-, and 10-years). These separate measures are then weighted and averaged to produce an overall measure for the fund. Funds with less than three years of performance history are not rated.

## Morningstar Style Box™

The Morningstar Style Box reveals a fund's investment strategy. For equity funds and fixed-income funds respectively, the vertical axis shows the market capitalization of the stocks owned or the average credit quality of the bonds owned. The horizontal axis shows investment style (value, blend, or growth) or interest rate sensitivity as measured by a bond's duration (short, intermediate or long). Duration is a measure of interest-rate sensitivity—the longer a fund's duration, the more sensitive the fund is to shifts in interest rates.

## Investment Risk

*Foreign Securities Funds/Emerging Markets Funds:* The investor should note that funds that invest in foreign securities involve special additional risks. These risks include, but are not limited to, currency risk, political risk, and risk associated with varying accounting standards. Investing in emerging markets may accentuate these risks.

*Money Market Funds:* The 7-day SEC current yield more closely reflects current earnings than does total return.

**Money market funds are neither insured nor guaranteed by the Federal Deposit Insurance Corporation or any other government agency. Although they seek to preserve the value of your investment at a cost of \$1 per share, it is possible to lose money by investing in the fund.**

*Sector Funds:* The investor should note that funds that invest exclusively in one sector or industry involve additional risks. The lack of industry diversification subjects the investor to increased industry-specific risks.

*Non-Diversified Funds:* The investor should note that funds that invest more of their assets in a single issuer involve additional risks, including share price fluctuations, because of the increased concentration of investments.

*Small-Cap Funds:* The investor should note that funds that invest in stocks of small companies involve additional risks. Smaller companies typically have a higher risk of failure, and are not as well established as larger blue-chip companies. Historically, smaller-company stocks have experienced a greater degree of market volatility than the overall market average.

*Mid-Cap Funds:* The investor should note that funds that invest in companies with market capitalizations below \$10 billion involve additional risks. The securities of these companies may be more volatile and less liquid than the securities of larger companies.

*Bond Funds:* The investor should note that funds that invest in debt securities involve interest rate risk, which occurs when interest rates rise, the prices of bonds can decrease and the investor can lose principal value. Bond investing in asset/mortgage-backed securities is subject to prepayment risk, where falling interest rates can cause security prices and income to decline due to early prepayment of principal, as well as to extension risk, where rising interest rates can cause securities prices to decline because expected prepayments of principal do not occur.

*High-Yield Bond Funds:* The investor should note that funds that invest in lower-rated debt securities (commonly referred to as junk bonds) involve additional risks because of the lower credit quality of the securities in the portfolio. The investor should be aware of the possible higher level of volatility, and increased risk of default.

*Tax-Free Municipal Bond Funds:* The investor should note that the income from tax-free municipal bond funds may be subject to state and local taxation and the Alternative Minimum Tax.

*Real Estate Securities Funds:* The investor should note that funds that concentrate their assets in real estate-related stocks involve additional risks, including fluctuations in property values, higher expenses or lower income than expected, and potential environmental problems and liability.

**Target-date funds: The principal value of Target Retirement funds is not guaranteed at any time, including the target date, which is the approximate date when investors are expected to begin withdrawing funds.**

**As Target Retirement Date Funds are actively managed, their asset allocations are subject to change and may vary from those indicated. They invest in many underlying funds and are exposed to the risks of different areas of the market. The higher a fund's allocation to stocks, the greater the risk. After the target date has been reached, some of these funds may be merged into a fund with a more stable asset allocation. Please consult the prospectus for more complete information.**

**In addition to the fund level expenses, target**

---

# Important Disclosures

**retirement date funds are also subject to the expenses of their underlying investments.**

*Socially Screened funds:* Because social screens exclude some investments, the Fund may not be able to take advantage of the same opportunities or market trends as Funds that do not use such criteria.

**TIAA-CREF Individual & Institutional Services, LLC, and Teachers Personal Investors Services, Inc., members FINRA, distribute securities products. You should consider the investment objectives, risks, charges and expenses before investing. Please call 877-518-9161 or log on to [tiaa-cref.org](http://tiaa-cref.org) for a current prospectus that contains this and other information. Please read the prospectus carefully before investing.**

**The data herein has been provided by independent third parties, including Morningstar and/or its content providers. Neither TIAA nor its affiliates has independently verified the accuracy or completeness of this information.**

**©2010 Teachers Insurance and Annuity Association - College Retirement Equities Fund (TIAA-CREF), New York, NY 10017.**

C45482